

# Fit for action again

**Gym gets its own makeover as fabulous refurb is revealed later this month**

PIDDLEHINTON Gym will be showcasing the sports and activities it has to offer later this month after a six-week closure for major refurbishment work.

The gym on Piddlehinton Enterprise Park, which aims to provide affordable facilities for indoor sports and recreational activities, has had its original 80-year-old roof replaced, new lighting installed and many other improvements.

Visitors to the official re-opening on Bank Holiday Monday, August 28, (10am-3pm) will be able to see the improved facilities and get involved in activities.

Remote control car racing, badminton, five-a-side football, junior tennis and table tennis will be on offer. Visitors will also be able to use the centre's fitness equipment.

The refurbishments were made possible due to a successful fundraising campaign, which saw donations from individuals, local businesses and groups, including Downing

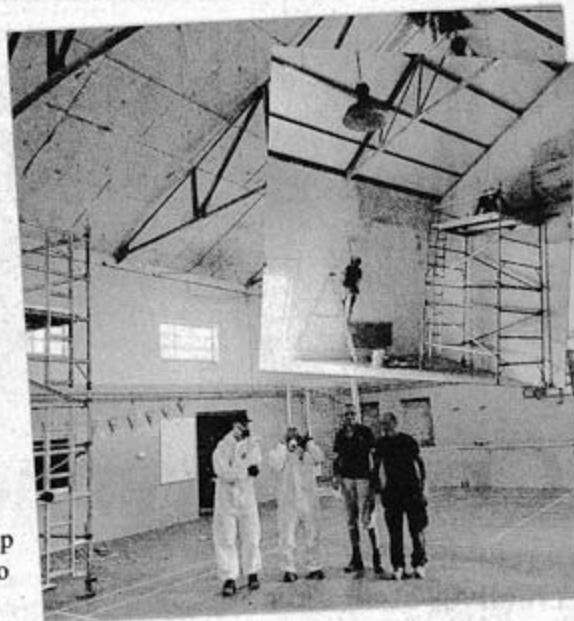
Renewables & Infrastructure Trust, Prototype Electronics, Jade Aden, Conduit Mead, Piddle Valley Parish Council and Wessex Internet.

Several of the clubs which use the gym also contributed, with Piddle Valley Badminton, Weymouth Remote Control Car Racing, Hardy Country Bowmen, Purbeck Archers and Dorchester Drama, donating a combined sum of £3,000 to the campaign.

Teams of volunteers gave a significant amount of their time to help with the renovations and all those who supported the effort will be invited to the re-opening to see the improvements first hand.

Paul Hayes, chair of the Piddlehinton Gym Ltd Charity, said: "I'd like to thank everyone for their support – it really shows the power of the community in protecting important rural assets.

"In particular, I'd like to recognise the core team – Adam White, Mike Healey, Chris Ebdon and Kenn Duffield, as well as Jill Haynes and Dorset Council's assets



team, without whom this challenging milestone would not have been achieved.

"I am excited to show the results of our efforts in the improved facilities on offer.

"We are busy – however we would love to hear from more clubs and people who may want to use our fantastic gym.

"Our operating ethos means the more clubs that use Piddlehinton Gym, the cheaper the rates can be."